

stability | performance | durable | robust

 **KALTES**[®]
Enclosures & Cabinets



innovative
cabinet technologies



World-class
cabinets...

Kaltes Elektrik, which continues its production with the mentality "Change is the only constant reality," is a company, that follows up the dynamics of the sector and offers a solution with its products, produced by its team of experts in its facilities integrated to technology in the necessary points.

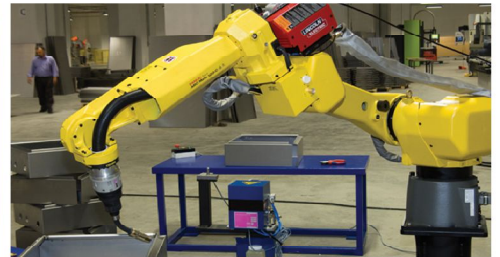
Production Facility



With a qualified and competent staff, Kaltes has focused on a production plan to materialize the customer demand professionally. Kaltes executes technical drawings and graphics by pre-study for each manufacturing stage from inquiry to delivery. With this production plan, the products are systematically processed so that the delivery can be achieved accurately in time.

Machinery Section

Kaltes Electric is a modern facility which is established in 5500m2 closed area, equipped with the latest technology production equipments and has a world class production with expert staff and professional management system.



Standard Measurement Production Line

We meet with the demands for the standart dimension panels very fastly with seperated 2 pres lines.

Punch Section

Punch division contains LVD brand and Amada brand punch machines. The programs that prepared in drawing division transfer to these CNC machine and the products are pressing with zero tolerance.

Bending Section

The products get bend in the high-tech bending section which consist of LVD brand, Safan brand and Amada brand CNC bending machines. These machines have varying press capacities between 80 to 100 tones.

Welding Section

In addition to our numerous manual welding machines, with our expert staff members we are producing high quantity demands with Fanuc brand automatic welding machine without sacrificing quality.

Gasket Section

Quality is a gross for us. We apply liquid gasket for every panel in any thickness according to demand with high-tech computer controlled gasket machine in spite of many manufacturer use bond gasket to decrease the costs.

Assembly Section

As Kaltes, we assemble the products attentively with our high-tech equipments and qualified staff. Customer orders are tested several times during and after assembly processes. The products are examined down to the last detail in order to, restore probable mistakes in advance and avoid any malfunction. Being the last phase before delivery, assembly is considered to be a critical process. We are aware that a probable mistake at this process can easily cause a malfunction and also customer's discontent.

Painting Section



Our painting section is the most sophisticated part of our facility. The painting process is particularly important due to ensure the products' long lasting and durability. The surface of the products cleans by PlafORIZATION system which exists only in 4 facilities all around Turkey and 450 in all over the world. This system redounds the paint quality of the products and also it is eco-friendly. After surface cleaning process, the products get heated up around 160 C to increase the holding percentage and quality of powder coat in the oven and get transferred to the powder coating section. After powder coating section products exceed to the oven once again to get heated up around 200 C and get ready for assembly.



SURFACE CLEANING - PLAFORIZATION

Before a metal can have any coating applied, it must be thoroughly cleaned to remove surface oils and other contaminants that would harm the powder coating. Conventional methods of cleaning generally use either multiple hot water rinses or treat with iron phosphates (mainly used as an ingredient in garden pesticides.)

As a result, harmful runoff is produced, which has to be drained into a holding tank, or worse yet, the sewer. The specialized process called plafORIZATION provides a simple, disposal-free solution for pre-treatment of metal. There is no water rinse involved, thus no wastewater is produced. This organic pre-treatment system is a truly one-step process to clean, pacify and seal metal surfaces before applying a topcoat.

The plafORIZATION process is conducted with low vapor pressure, emitting virtually no VOCs. There is no water rinse involved, so no wastewater is produced. No sludge is created; nothing is added to a landfill. The process contains no halogenated compounds, ozone-depleting compounds, carcinogens, mutagens, or hazardous air pollutants. PlafORIZATION is one more step in the on going quest to create a remarkably durable product that can withstand the elements and still promote a healthy environment. This special system exists only at 3 facilities in Turkey and 450 in all over the world is widely acclaimed as eco-friendly by means of its chemicals which does not harm the environment.

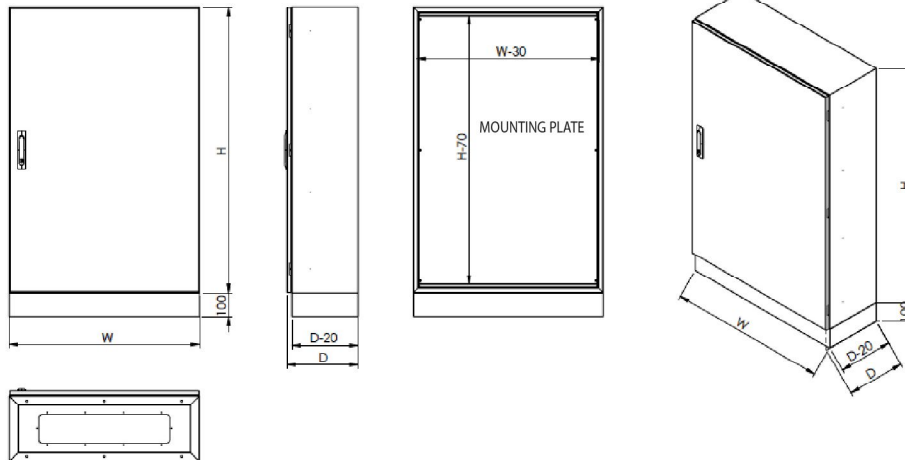
POWDER COATING

Since its first usage, Powder coating has become more popular while its technology has been enhanced. Nevertheless, a qualified facility is a must for a good result. As Kaltes we evaluate many parameters while selecting the most convenient spraying method. We consider many factors such as the properties of the plate, the frequency of color change and finishing quality etc.



Technical Specifications

PARTS	THICKNESS	RAW MATERIAL	DOOR		
Carcass	1.50 mm	Sheet Metal	Front Door: Rod Latch Lock Systems and Concealed Hinge (Front door can be open up to 110°)		
Floor Base	1.50 mm	Sheet Metal			
Mounting Plate	1.50 mm	Galvanized Sheet Metal			
Code System: EXP: SET-T-DB 8011025			PAINT		
SET-T-DB			RAL7035 Electrostatic Powder Coating		
Main Code of IP55 Wallmount Type Enclosure (with floor base)		PROTECTION			
"80"		Dimension of Widht in "CENTIMETER"		IP55 - IK10	
"110"		Dimension of Height in "CENTIMETER"		AVAILABLE DIMENSIONS	
"25"		Dimension of Depth in "CENTIMETER"		Widht : 800mm Height : 1100~1500mm Depth : 250~300 mm	
* Height dimensions includes 100mm floorbase (H+H1)					

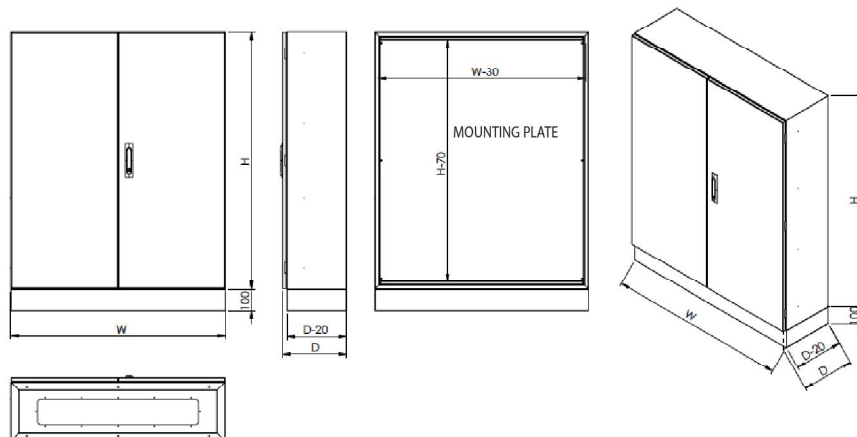


WALLMOUNT ENCLOSURES Double Door With Floor Base (IP55)

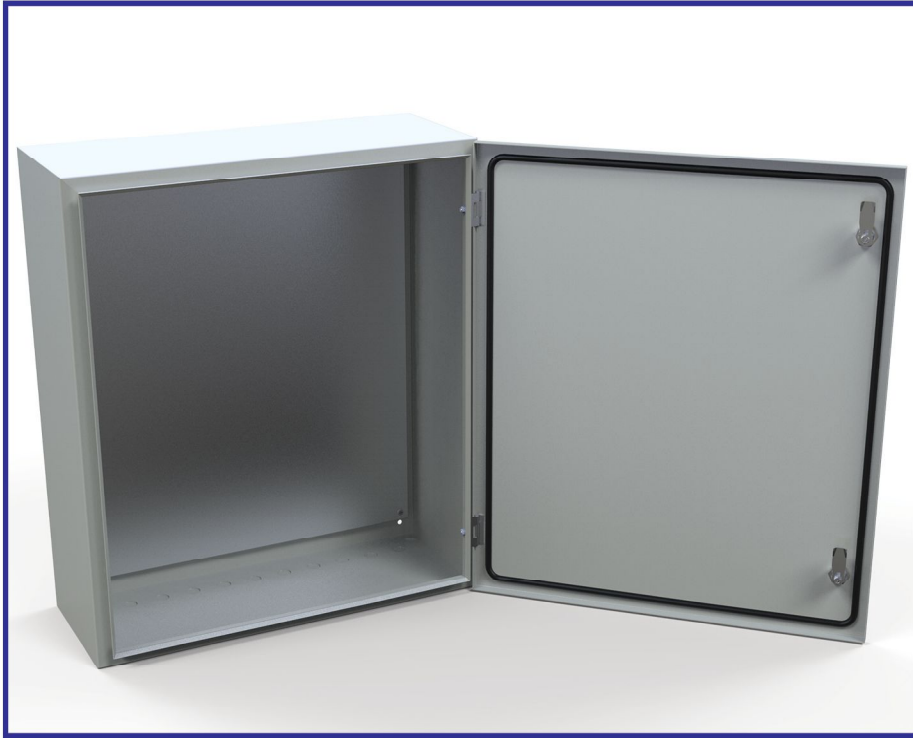


Technical Specifications

PARTS	THICKNESS	RAW MATERIAL	DOOR
Carcass	1.50 mm	Sheet Metal	Front Door: Rod Latch Lock Systems and Concealed Hinge (Front door can be open up to 110°)
Floor Base	1.50 mm	Sheet Metal	
Mounting Plate	1.50 mm	Galvanized Sheet Metal	
Code System: EXP: SET-T-DD 10011025			PAINT
SET-T-DD			RAL7035 Electrostatic Powder Coating
"100"			PROTECTION
"110"			IP55 - IK10
"25"			AVAILABLE DIMENSIONS
			Width : 1000~1200mm Height : 1100~1500mm Depth : 250~300 mm
* Height dimensions includes 100mm floorbase (H+H1)			

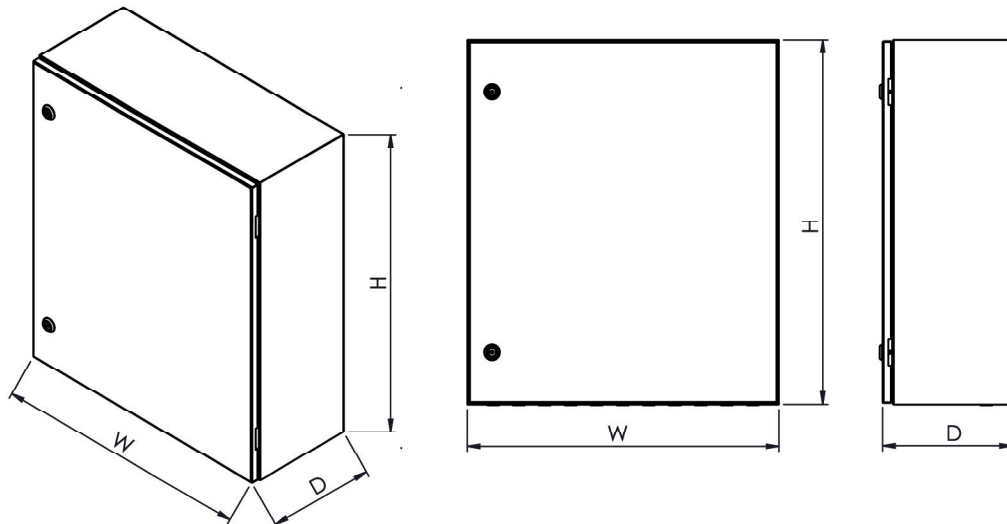


WALLMOUNT ENCLOSURES Surface Mounted Distribution Boards (IP65)



Technical Specifications

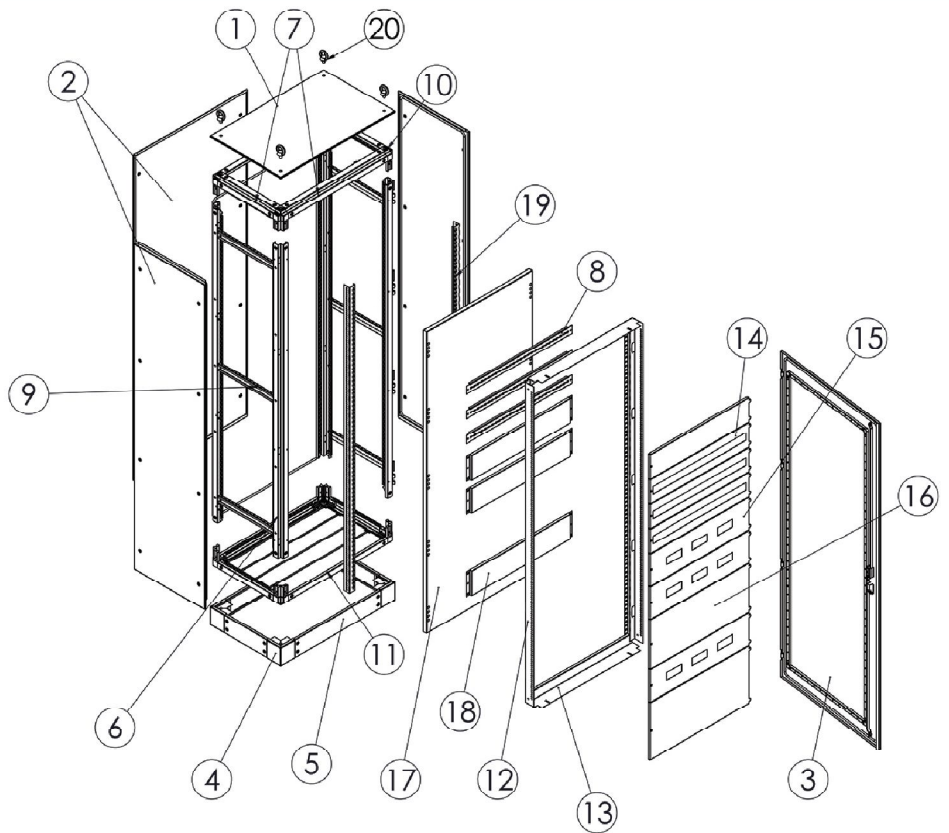
PARTS	THICKNESS	RAW MATERIAL	DOOR
Carcass	1.20 mm	Sheet Metal	Quarter Turn - Spring Loaded Locks and Corner Hinge or Concealed Hinge (Front door can be open up to 150°)
Mounting Plate	1.50 mm	Galvanized Sheet Metal	
Code System: EXP: SET-T-WHP 406020			PAINT
SET-T-WHP			RAL7035 Electrostatic Powder Coating
"40"			PROTECTION
"60"			IP65 - IK10
"20"			AVAILABLE DIMENSIONS
			Width : 300-800mm Height : 400-1200mm Depth : 200-300 mm





CONTENT LIST

- 1- Top Cover
- 2- Back & Side Cover (door)
- 3- Front Door
- 4- Floor Base Corner Part
- 5- Floor Base Side Profile
- 6- Upright Profile (Vertical)
- 7- Horizontal Profile
- 8- Rail Carrier
- 9- Side Support
- 10- Cargass Corner Wedge (Connection Part)
- 11- Bottom Cover (Gland Plate)
- 12- Interior Cover Profile (Upright)
- 13- Interior Cover Profile (Horizontal)
- 14- MCB Cover Plate
- 15- MCCB Cover Plate
- 16- Cover Plate (Imperforated)
- 17- Mounting Plate (Full)
- 18- Mounting Plate (Pieced)
- 19- Interior Mounting Profile
- 20- Eyebolt (M12)



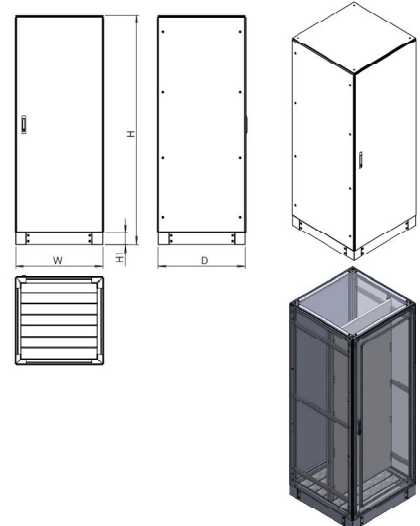


Technical Specifications

PARTS	THICKNESS H ≤ 1700	RAW MATERIAL	THICKNESS H ≥ 1800	DOOR
Carcass	1.50 mm	Sheet Metal	2.00 mm	Front Door: Rod Latch Lock Systems and Concealed Hinge (Front door can be open up to 110°)
Front Door	2.00 mm	Sheet Metal	2.00 mm*	
Back Door	1.50 mm	Sheet Metal	1.50 mm*	PAINT RAL7035 Electrostatic Powder Coating
Side Cover	1.50 mm	Sheet Metal	1.50 mm*	
Top Cover	1.50 mm	Sheet Metal	1.50 mm*	PROTECTION IP55 - IK10
Bottom Cover	1.50 mm	Galvanized Sheet Metal	1.50 mm*	
Mounting Profile	2.00 mm	Galvanized Sheet Metal	2.00 mm	AVAILABLE DIMENSIONS Width : 400~800mm Height : 1400~2100mm Depth : 400~800 mm
Base Corner	2.00 mm	Sheet Metal	2.00 mm*	
Base Cover	1.20 mm	Sheet Metal	1.20 mm	
Mounting Plate	2.00 mm	Galvanized Sheet Metal	2.00 mm	
*Optional Thickness up to 2.00 mm				* Height dimensions includes 100mm floorbase (H+H1)

Code System: EXP: SET-D-FH4204

SET-D-FI	Main Code of Free Standing Modular Type Panels IP41
SET-D-FIP	Main Code of Free Standing Modular Type Panels IP54
SET-D-FH	Main Code of Free Standing Modular Type Panels IP55
" 4 "	Dimension of Width in "DECIMETER"
" 20 "	Dimension of Height in "DECIMETER"
" 4 "	Dimension of Depth in "DECIMETER"



FREE STANDING MODULAR TYPE PANELS Double Door (IP55)

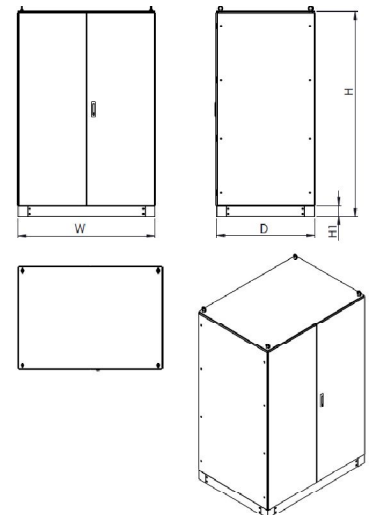


Technical Specifications

PARTS	THICKNESS H ≤ 1700	RAW MATERIAL	THICKNESS H ≥ 1800	DOOR
Carcass	1.50 mm	Sheet Metal	2.00 mm	Front Door: Rod Latch Lock Systems and Concealed Hinge (Front door can be open up to 110°)
Front Door	2.00 mm	Sheet Metal	2.00 mm	
Back Door	1.50 mm	Sheet Metal	1.50 mm*	PAINT RAL7035 Electrostatic Powder Coating
Side Cover	1.50 mm	Sheet Metal	1.50 mm*	
Top Cover	1.50 mm	Sheet Metal	1.50 mm*	PROTECTION IP55 - IK10
Bottom Cover	1.50 mm	Galvanized Sheet Metal	1.50 mm*	
Mounting Profile	2.00 mm	Galvanized Sheet Metal	2.00 mm	AVAILABLE DIMENSIONS Width : 1000~1600mm Height : 1400~2100mm Depth : 400~800 mm
Base Corner	2.00 mm	Sheet Metal	2.00 mm	
Base Cover	1.20 mm	Sheet Metal	1.20 mm	
Mounting Plate	2.00 mm	Galvanized Sheet Metal	2.00 mm	
* Optional Thickness up to 2.00 mm				* Height dimensions includes 100mm floorbase (H+H1)

Code System: EXP:SET-D-DD 10144

SET-D-DI	Main Code of Double Door IP41 Freestanding Enclosure
SET-D-DD	Main Code of Double Door IP55 Freestanding Enclosure
"10"	Dimension of Width in DECIMETER
"14"	Dimension of Height in DECIMETER
"4"	Dimension of Depth in DECIMETER



High Tech. + Environment Friendly Production



TS EN 62208
IEC 62208



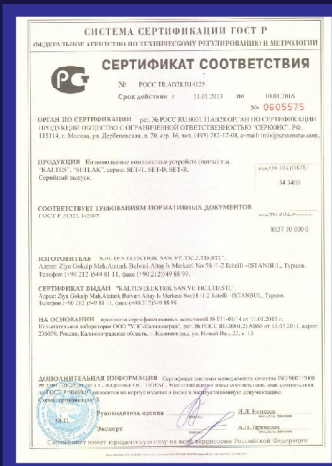
DECLARATION OF CONFORMITY



ISO 9001 : 2008



GOST-R-853810



GOST-R-853710



SIESMIC TEST

KALTES, ELEKTRİK, SAN. VE TİC. LTD. ŞTİ.
İkitelli Organize San. Böl. Ziya Gökalp Mah.
Atatürk Bulvarı No: 58/1-2 İkitelli
İstanbul/TURKEY
 www.kalteselektrik.com.tr

 +90(212) 549 81 11 - 12 - 13
 +90(212) 549 88 99
 info@kalteselektrik.com.tr
 export@kalteselektrik.com.tr